

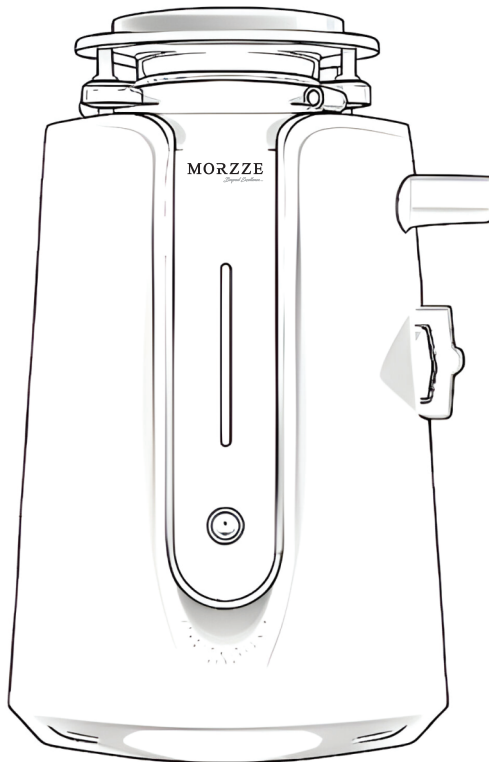
# MORZZE

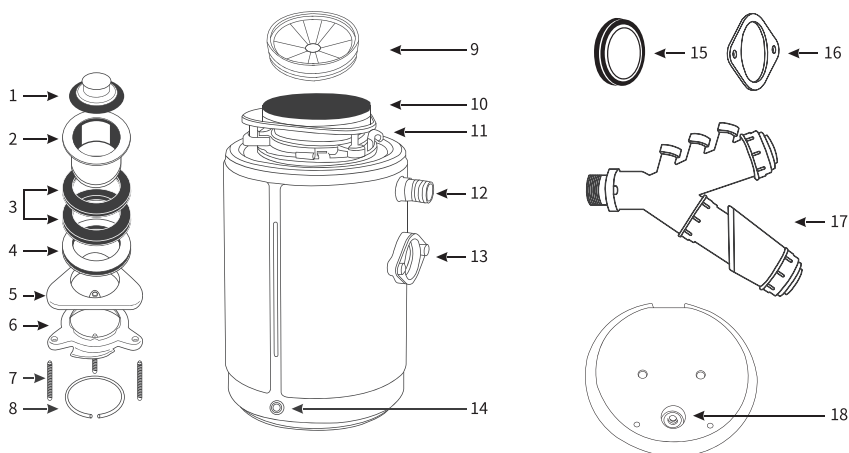
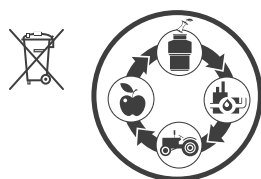
*Beyond Excellence...*

By **Anupam**  
GROUP

## MANUAL FOR INSTALLATION AND MAINTENANCE OF INTELLIGENT FOOD WASTE DISPOSER

### MFD-1101





## Part List (May Vary)

1. Plug	7. Screws (3)	13. Drainage Outlet
2. Sink Flange	8. Snap Spring	14. Manual Switch
3. Rubber Gaskets (2)	9. Splash Guard	15. Drainage Sealing Ring
4. Fibre Liner (Optional)	10. Sealing Pad	16. Drainage Flange Sheet
5. Supporting Ring	11. Lower Mounting Ring	17. Tee Junction
6. Mounting Ring	12. Dish Washer Container	18. Overcurrent Production Switch



### Warning:

Do Not Put Your Hand In The Disposer During Operation. It may cause Serious Injuries



Chicken Bone



Egg Shell



Vegetable & Fruit Leftover



Fish Bone



Nuts



No Cloth



No Glass



No Metal  
& Wood



No Plastic



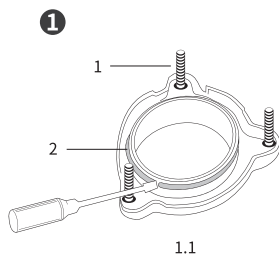
No Polythene

# CAUTIONS FOR SAFE USE

## SAFETY NOTICE FOR USING

- 1 Please read the Food Waste disposer Operating Manual carefully before using.
- 2 This waste disposer is specially designed for household food waste only, so it is not suitable for other working purposes.
- 3 Do not grind and dispose of non-food wastes (such as plastic bags, cloth, leather, metal, ceramics, aluminum, wire, rubber, stone, etc.) in the food waste disposer.
- 4 Do not grind and dispose of hard and high-fiber food waste (such as bamboo shoot shells, corn-bracts, etc.) in the food waste disposer.
- 5 No hands or long rods are allowed to reach during machine operation.
- 6 When food waste is hard and fibrous, it is necessary to put in less than a few times to increase the amount of water injection, which will help to deal with the crushing effect and discharge.
- 7 Make sure that the splash guard is installed in place before it is used, so as not to spin out the rubbish during grinding and stain the clothes.
- 8 You must unplug the power Supply and clean it with long clips or pliers before you can remove the clogged or removed objects from the Food Waste Disposer.
- 9 When you stop using Food Waste Disposer, cover the sink plug to prevent objects such as metal or wood falling in.
- 10 Do not get water into the base of the Food Waste Disposer and the power Supply. If there is any water, it must be wiped and dried before use.
- 11 Never use a sink equipped with a Food Waste Disposer for any improper purpose other than handling food waste.
- 12 It is normal for the Food Waste Disposer to deal with different food waste, and the noise inside the machine is different according to different hardness and softness.
- 13 If the machine is powered off during work, unplug the power Supply, then plug in the power again, and follow the normal use process.
- 14 Warning-If the power cord is damaged, it must be repaired by the company or professional in order to avoid danger, and it must not be disassembled by yourself.
- 15 Warning-The children could use the Waste Disposer in a safe way only under the condition of receiving sufficient guidance and knowing that may be dangerous if they do not use it appropriately, they could be allowed using the Food Waste Disposer by themselves.
- 16 Warning-The Food Waste Disposer is a supervised product. Please do not leave while you are using it.

# INSTALATION



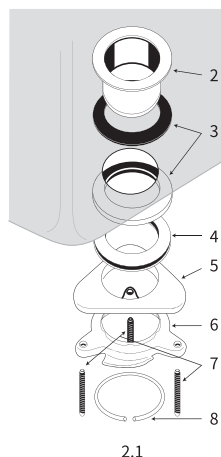
1.1

## 1 Remove New Processor & Installation of Components.

- 1 Turn the assembly over (see figure 1.1) and loosen the three mounting screws (1) until you can reach the snap ring (2).
- 2 Use a screwdriver to pry the snap ring from the sink flange.

## 2 Connect the upper install components to the sink

Please refer to figure 2.1



2.1

- 1 Two rubber gaskets should be placed (3) under the sink flange (2) Make sure there are no bits in the sink, put the flange/gasket into the sink hole. A heavier object can be placed in the sink to keep the flange in a right position (Put a towel under the object to prevent scratching.)
- 2 Under the sink, slide the second rubber gasket (3), the fiber liner (optional)(4), and the metal support ring (5) (flat side up) onto the sink flange.
- 3 Place the second rubber gasket fiber liner (optional) and metal support ring in place and slide the mounting ring (6) onto the sink flange to hold it against the support ring.
- 4 When the rubber seal ring, fiber liner (optional), support ring and mounting ring are pressed against the bottom of the sink, slide the snap spring (8) onto the sink flange until the mouth is in the groove of the flange.
- 5 Screw three mounting screws (7) up onto the sink until the install components are firmly and smoothly mounted on the sink.

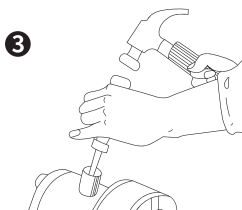
## 3 Dishwasher connection and spillway-proof connection

Waste water from the dishwasher can be fed into the disposer through an inlet at the top of the disposer. All models with a plug on the inside of the intake pipe. Once removed, the knock-out plug can not be recovered.

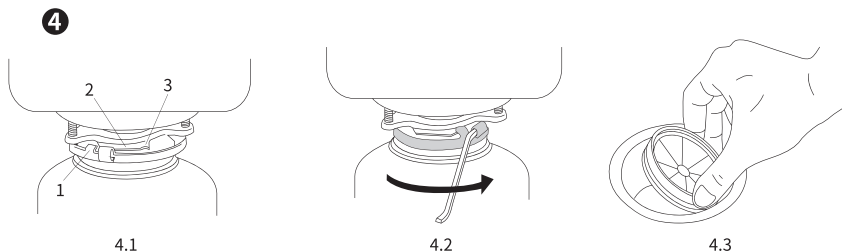
Note: The dishwasher may overflow if the plug is not removed. The connection must conform to the local pipeline connection regulations. **There is no need to take it out without a dishwasher.**

### Open Joint Block

- 1 Place the disposer on its side and insert the screwdriver into the inlet of the dishwasher so that the top of the screwdriver is on the outer edge of the knock-out plug.
- 2 Use a hammer at one end of the screwdriver's handle until the die-pressing plug is loose (see figure 3.1).
- 3 Remove the loose strike plug from the inside of the disposer. If the sink overflows, you should connect the anti-overflow inlet of the end of the tube, and unload the head of

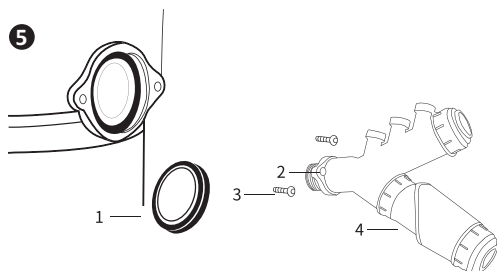


3.1



#### 4 Connect the disposer to the install component

- Before installing the disposer to the sink, remove all objects from the disposer's interior. Please make sure that the motor reset button at the bottom of the disposer is accessible when installing this product, and there is no other objects in this space.
- Make sure the three mounting hooks (1) are in place to slide onto the installation rail by adjusting the position of the disposer(2). (See figure 4.1)
- Lift the disposer, insert the top (mounting gasket) into the install components and rotate the lower mounting ring to the right (using a screwdriver or adjustable pliers to lubricate the mounting track with a little detergent) until the hook is fixed to the convex point (3) on the mounting ring track (see figure 4.2). Make sure all hooks are fixed at the bump. If the installation is not in place, the vibration will slowly loosen after a long time start-up and cause leakage and burn the motor (Be sure to keep in mind).
- Put water in the sink and check for leaks  
Insert the splash guard into the mouth of the sink, the flat side is facing up. (See figure 4.3)



#### 5 Connect the discharge pipe to the waste drain pipe Discharge Pipe Installation

- Place the metal flange (2) on the discharge pipe (4). Insert the rubber gasket (1) (the lip of the gasket faces the metal flange) into the discharge pipe.
- Fix the metal flange and discharge pipe to the disposer with two 13mm bolts) 3. processors need to continue with steps 3-5
- Aligning the drain pipe with the tee by rotating the disposer If the discharge tube is too short the extended pipes can be bought from the hardware store. (The processor must be maintained in a vertical position to prevent vibrating)
- Place the nut and ring on the drain pipe (accessories) at one time and then tighten it on the drain hose. (If you use a double sink, use separate drain hoses on each side of the sink.)
- Ensure that the lower mounting ring is still firmly fixed to the edge of the mounting flange. (See figure 4.2)

#### ⚠ Danger

To avoid physical injury, do not place the head or body under the disposer; the device may fall during installation.

#### ⚠ Dangerous Property or Personal Safety

- A spring-loaded hose clamp must be used by the garbage disposer, is connected to the drain pipe. If the spring-loaded hose is out of used, it will be cause invalidated warranty and may result in premature failure of the damping and drainage assembly.
- Periodically check if there is a leak in the disposer and pipeline connection, which can cause property damage. The manufacturer is not responsible for damage to property caused by the water leakage.
- During the operation of garbage disposer, no hand or long rod is allowed.

## 6 Connect disposer to power

To avoid electric shock, cut off the power supply before installing or repairing the earthing.

If you are not familiar with electricity, contact a qualified electrician to connect the earthing to the circuit.

If a three-core earthing plug is used the plug must be inserted into a three-hole earthing socket. Do not alter equipment with plug attached (if applicable)

Improper connection of the earthing conductor of the equipment may lead to electric shock.

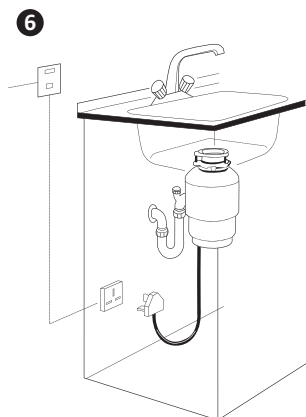
All wiring must comply with local electricity codes.

Do not connect the ground wire to the gas delivery pipe.

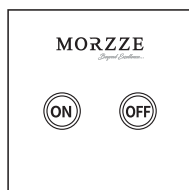
Do not re-connect the current on the main maintenance panel before installing an appropriate earthing socket.

If the power cord is damaged, it must be replaced by the manufacturer, the manufacturer's service agent or similar qualified personnel to avoid danger.

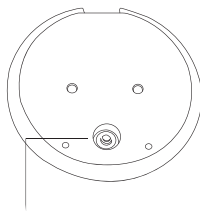
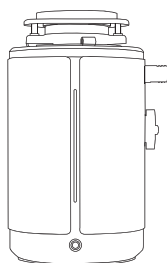
Note: You must use a wall-mounted socket. Any additional socket shall be installed by a qualified electrician and properly grounded. The disposer is equipped with a molded plug and power cord.



## 7



Wireless Switch



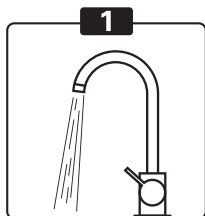
### Machine bottom manual reset switch

When the machine is stuck external object, pull out the plug with pliers or shelves to take out it firstly, then plug in, and press the reposition switch, the machine will work normally.

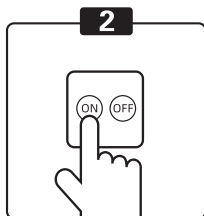
## 7 Wireless switch and disposer pairing

- 1 Press and hold the push-button switch on the disposer until the machine light flashes yellow and blue, press the ON and OFF buttons on the panel switch with the other hand for several times.
- 2 Release the push button switch ON the machine and press ON and OFF buttons on the induction switch for several times until the machine is paired successfully, so that the machine can be opened normally.
- 3 The machines are matched successfully by the company, but it is possible that the machine will lose memory and can be matched again by the above method.

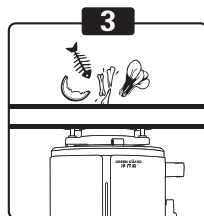
## OPERATING PROCEDURES



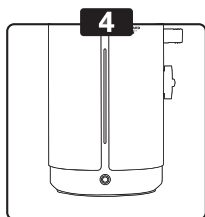
Turn on the cold water faucet



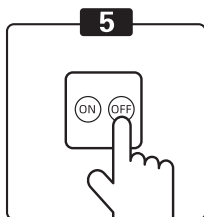
Turn on the remote control switch



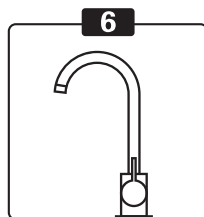
Pour into kitchen waste



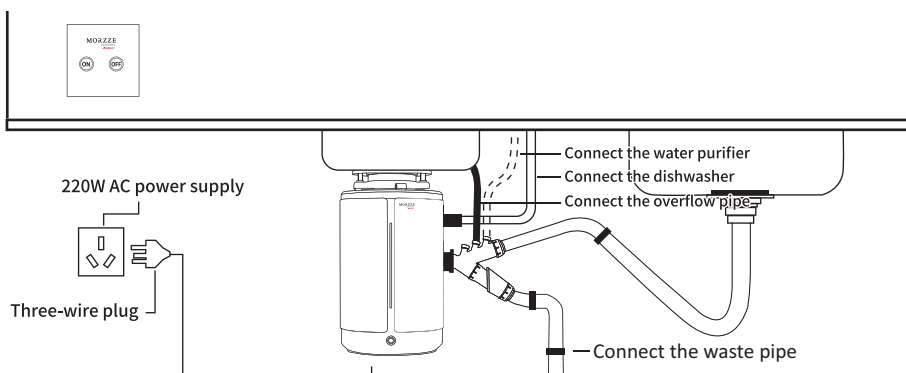
The machine runs until only the motor and the running water can be heard



Turn off the switch after grinding



Turn off the faucet



MORZZE  
*Beyond Excellence*



FIND US!

ANUPAM RETAIL LTD. / 1800 11 0123 / [www.morzze.com](http://www.morzze.com)

MORZZE is a Trademark of ANUPAM RETAIL LTD. All Rights Reserved.